



# **MECG-200 12 LEAD Cable ECG**

## **SERVICE MANUAL**

Version: 1.2

Release: January 11, 2006

**MedEx Tech-Trade Corporation**

**MedEx can modify the documents without notice.**

---

# Table of Contents

---

GENERAL INFORMATION .....	3
MEDEX PRODUCT SUPPORT.....	3
USING THIS MANUAL .....	3
COMPONENTS .....	3
COMPUTER REQUIREMENTS .....	3
INTENDED USE.....	4
GENERAL .....	4
RISKS AND SIDE EFFECTS .....	4
CLASSIFICATION.....	4
ENVIRONMENT REQUIREMENTS.....	4
STANDARDS .....	5
RELATED DIRECTORIES .....	5
SYSTEM SETTING TOOLS.....	6
Hospital name setting.....	6
AC filter and baseline filter setting .....	7

## GENERAL INFORMATION

### MEDEX PRODUCT SUPPORT

You can get technical assistance, check on the status of problems, or report new problems by contacting our Product Support Group.

China

Monday-Friday 8:30am-5: 30pm

+86-10-62974855

World Wide Web <http://www.medextech.com>

E-mail: [support@medextech.com](mailto:support@medextech.com) or [info@medextech.com](mailto:info@medextech.com)

### USING THIS MANUAL

This document provides information on running and operating MedEx Cable ECG. As it is assumed that you are familiar with Windows, the Microsoft software used is described only briefly.

### COMPONENTS

#### **CABLE ECG BOX consists of the following components:**

The components may vary depending on the order.

- Cable ECG Box
- Patient Cable
- Clamp electrodes
- Chest electrodes

The other accessorial equipments:

- Computer
- Printer
- Print cable
- Mouse
- Keyboard
- Grounded Cord

Ensure the existing assembly is correctly installed and connected. This should be done prior to turning on the system.

### COMPUTER REQUIREMENTS

Minimal requirements:

1.4GHz Pentium CPU, 128 MB RAM, 20 GB Hard Disk.

## INTENDED USE

The Cable ECG BOX is designed for 12 Channels ECG test.

## GENERAL

The CABLE ECG BOX is certified by CE and meets the requirements of the 93/42/EEC. It is designed to meet the standards EN 60601-1, IEC 60601-1-1, IEC 60601-1-2, IEC 60601-2-51, IEC 60601-2-25 and complies with the guidelines issued by TUV Rheinland Group. Before using accessories produced by another manufacturer make sure that all safety standards are proved by an authorized examining board.

The functionality of the CABLE ECG BOX may be disturbed by heavy electromagnetic radiation. Try to avoid standing right next to mobile phones, microwaves and radio broadcast masts if possible.

This document provides information on installing and operating MedEx Cable ECG System. The system requires the **WINDOWS 2000 (SP4) or Windows XP** operating system.

## RISKS AND SIDE EFFECTS

Up to now, when using the device correctly, no side effects and risks are known to the manufacturer.

## CLASSIFICATION

Classification according to EN 60601-1:

Type of protection against electric shock:

Device of safety class I

. Grade of protection against electric shock:

Device of type BF

. Grade of protection when using the devices while anesthetics are present:

Devices are suitable for continuous operation.

CE-Certification



Type BF

## ENVIRONMENT REQUIREMENTS

### Conditions for operation

The following operation conditions must be met:

Temperature: +10 to +50°C

Ambient pressure: 600 to 1200 hPa

Relative humidity: 0 to 95%

## Conditions for transport and storage

The following transportation and storage conditions must be met:

Temperature: -20°C to 60°C

Ambient pressure: 500 hPa to 1060 hPa

Relative humidity: 5% to 90%

## STANDARDS

EN 980 / EN 1041 (English Version)

EN 1441 / ISO 14971 (English Version)

ISO 13485: 2003 (English Version)

GB 191-2000 Graphical representation of Package and Delivery

GB 9706.1-1995 Medical Electric Device, the first part: Currency Security Requirements

GB/T 14710-1993 Environment Requirement and Experiment Method of Medical Electric Device

YY/T 0316-2003 / ISO 14971: 2000 Medical Appliance, Venture Management application for Medical Appliance

YY 1139-2000 Signal channel and multiple channel ECG equipment

IEC 60601 (English Version)

IEC 60601-1-1 (English Version)

IEC 60601-1-2 (English Version)

IEC 60601-1-4 (English Version)

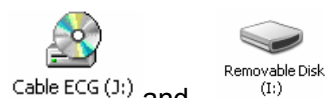
IEC 60601-2-25 (English Version)

IEC 60601-2-51 (English Version)

## RELATED DIRECTORIES

1. There is no need for user to install the USB driver. After connecting the cable ECG box with the computer, system will install the USB driver automatically. The USB drive files will be saved in **C:\Medex\UsbXPres**

2. After connecting with the computer, there are two icons



and

in

**My Computer.**

3. The following documents are in **Cable ECG**. Right click it and select **Open** in the pop up menu.




4. The following documents are in **Removable Disk**, right click it and select **Open** in the pop up menu. The **EcgData** folder contains the previously saved ECG data files.

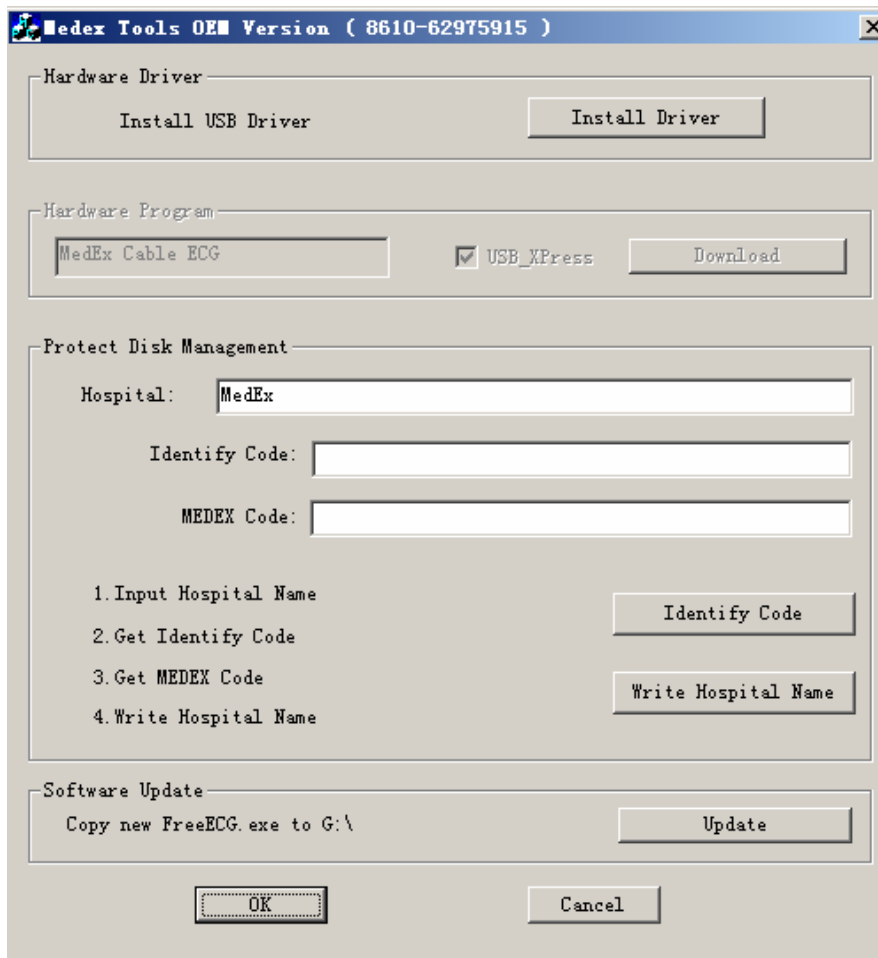


## SYSTEM SETTING TOOLS

### HOSPITAL NAME SETTING

If MedEx Cable ECG is used in the same hospital, follow the following instruction to set a permanent hospital name.

1. Enter **My computer / cable ECG** drive, double click the  icon, then the following window pops up.



2. Input the hospital name in the Hospital input box and click Identify Code button, then it will show an Identify code in the Identify Code input box.
3. Send the identify code to MedEx, and MedEx will produce a MedEx code, which is generated according to the hospital name, and then send the code back to you.
4. Input the hospital name, identify code and MedEx code in the corresponding input box, and click **Write Hospital name**.

Then the hospital name will show in the patient information window every time you open it. But you also can change it if you want to show the other hospital's name in the printed report.

## AC FILTER AND BASELINE FILTER SETTING

AC filter and baseline filter setting can be finished in the Help menu.



shows the information about MedEx Cable ECG. You can set AC filter between 50Hz and 60Hz and set the baseline filter between 0.07Hz and 0.08Hz.

